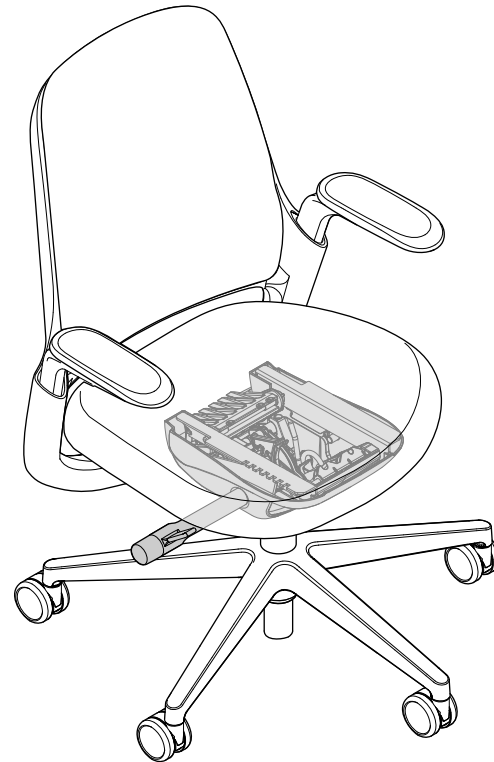


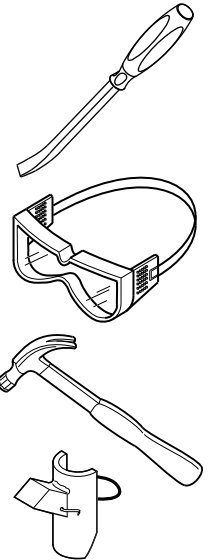
Removal and Installation of Chair Control on Steelcase Series® 1 and Series® 2 Chairs



Steelcase Series 1

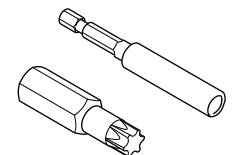
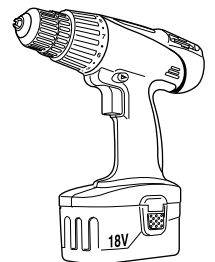


Steelcase Series 2



**Pneumatic Cylinder
Removal Tool**

Only required for Series 2
with Arms



Torx T-30

If you have a problem, question, or request, call your local dealer, or Steelcase Line 1 at **888.STEELCASE** (888.783.3522) for immediate action by people who want to help you.

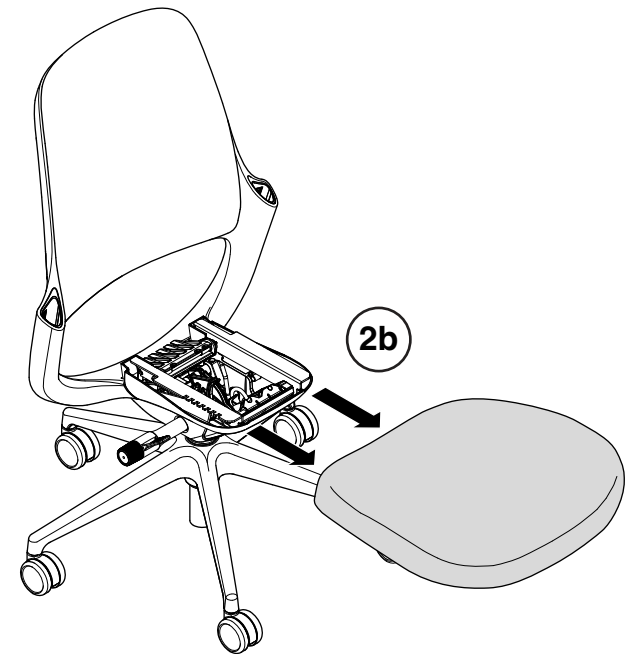
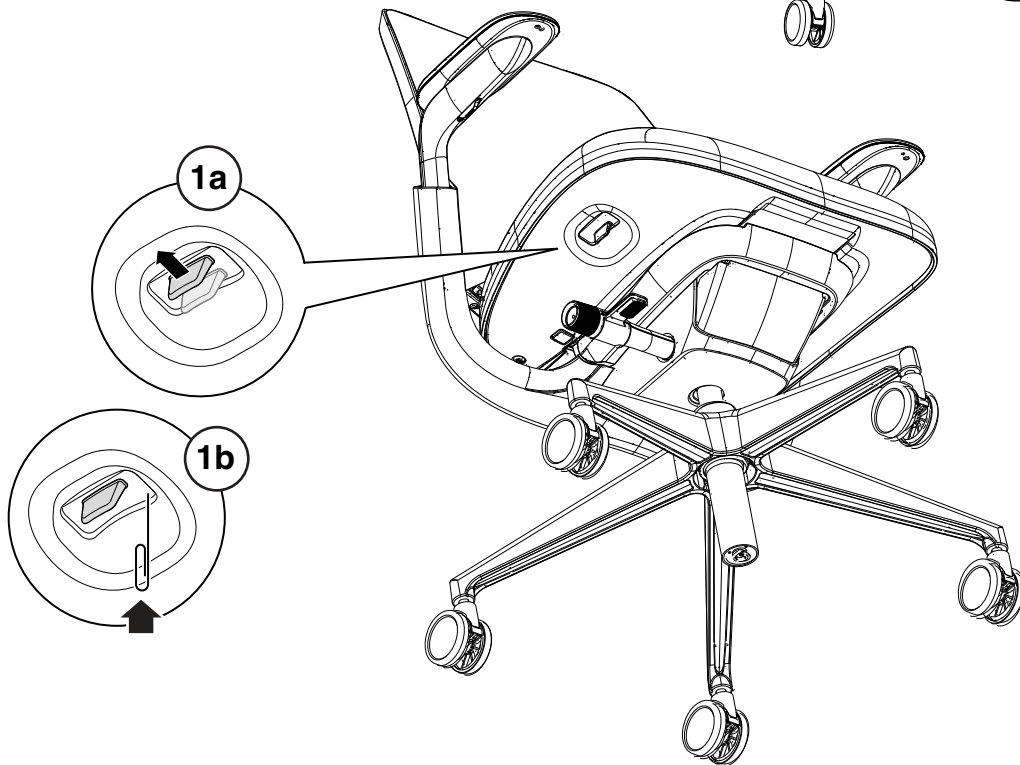
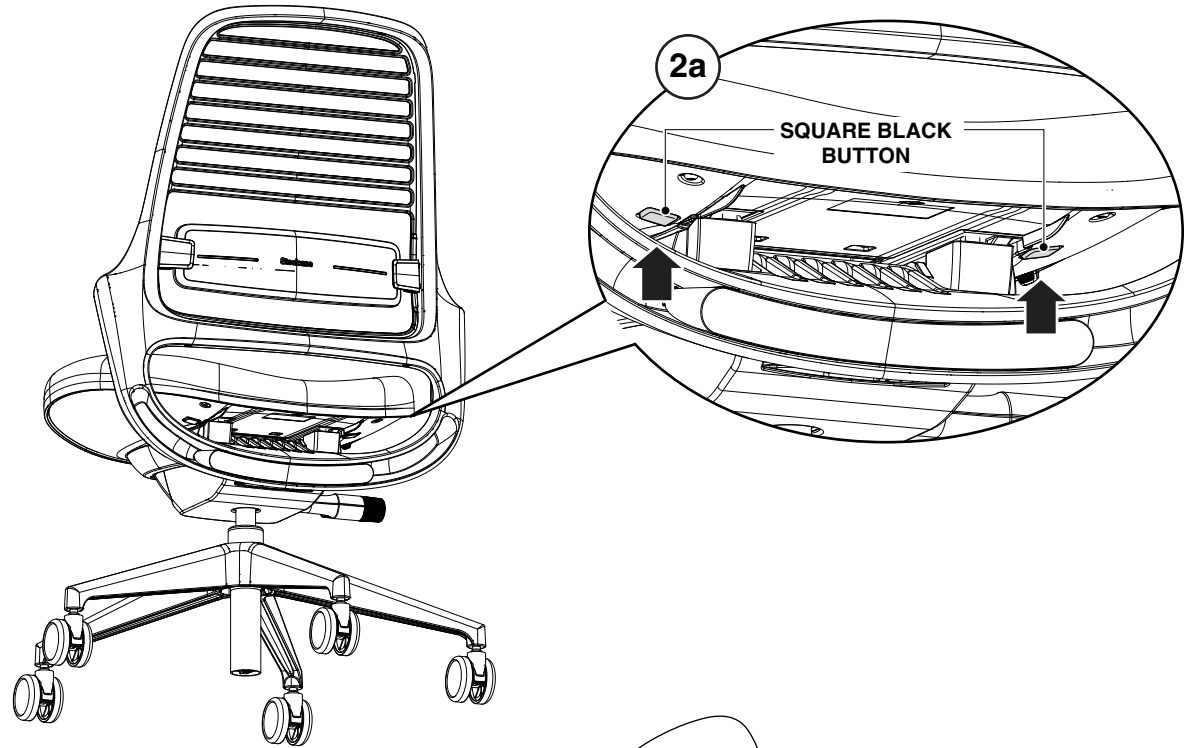
(Outside the U.S.A., Canada, Mexico, Puerto Rico, and the U.S. Virgin Islands, call: 1.616.247.2500)
Or visit our website: www.steelcase.com

© 2017 Steelcase Inc.
Grand Rapids, MI 49501
U.S.A.

Printed in U.S.A.

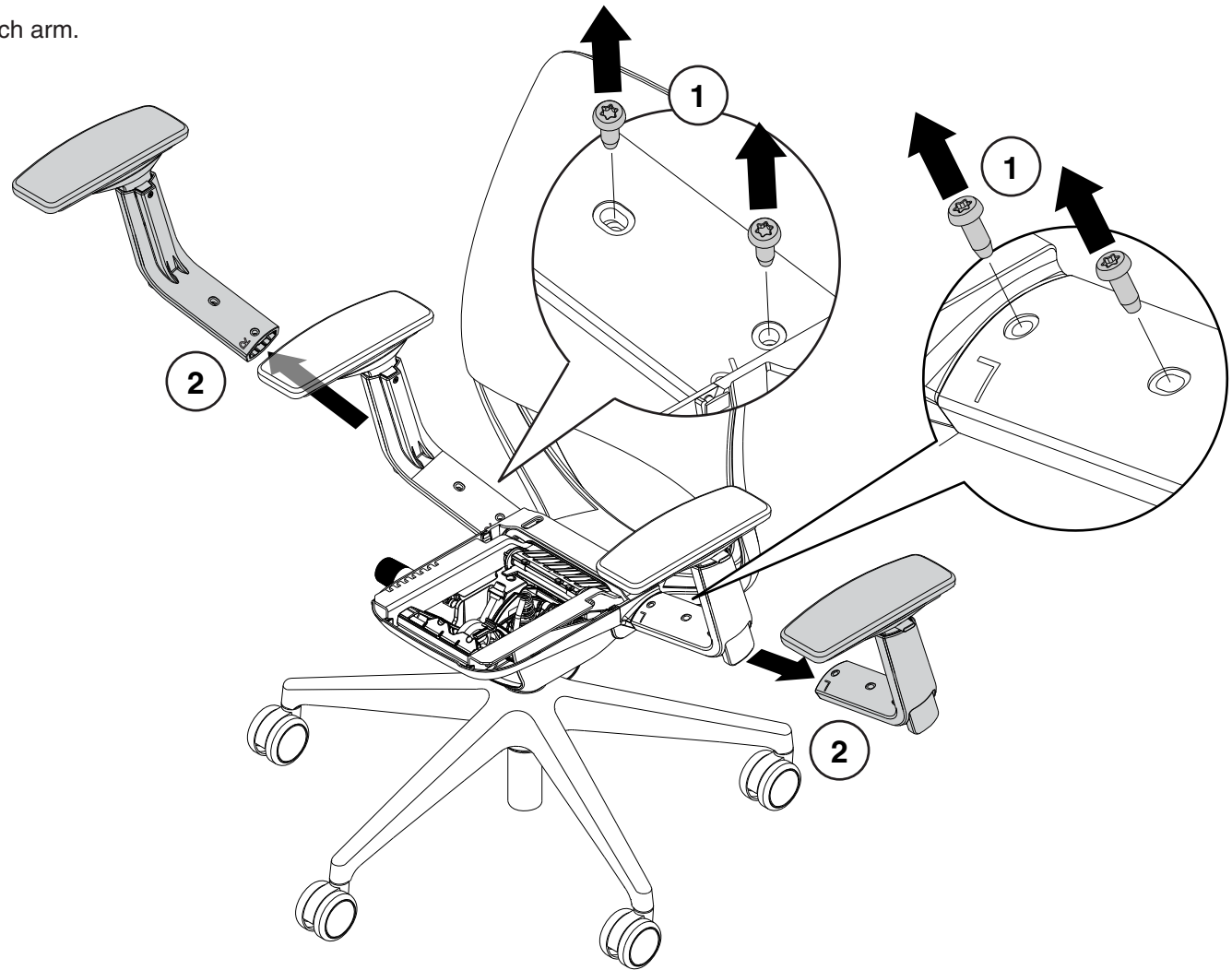
Remove Seat (Series 1 shown)

1. Pull seat depth lever out (1a) (Optional: insert paperclip wire as shown in 1b) and slide seat forward.
2. Push and hold two square black buttons near the rear of the seat (2a) as you slide the seat forward and off (2b).



Remove Arms for Series 2 (if present) (Series 2 shown)

1. Remove two (2) screws on each arm.
2. Remove old arms.



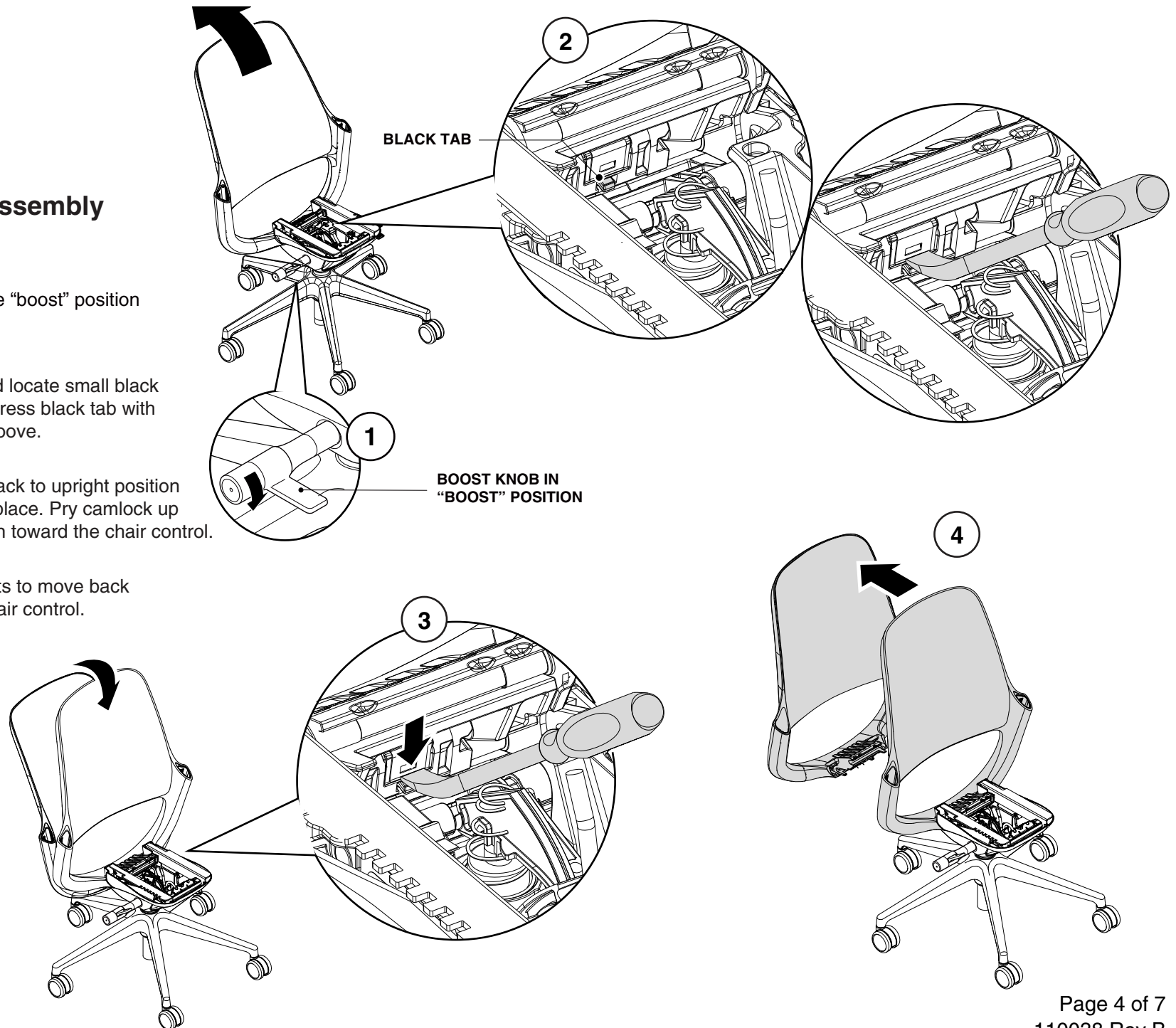
Remove Back Assembly (Series 1 shown)

1. Put boost knob in the “boost” position (middle knob position).

2. Recline the back and locate small black tab on beige camlock. Press black tab with Prybar until it's in the groove.

3. Allow back to rock back to upright position while holding Prybar in place. Pry camlock up by pushing Pry bar down toward the chair control.

4. Hold frame as it starts to move back and release from the chair control.



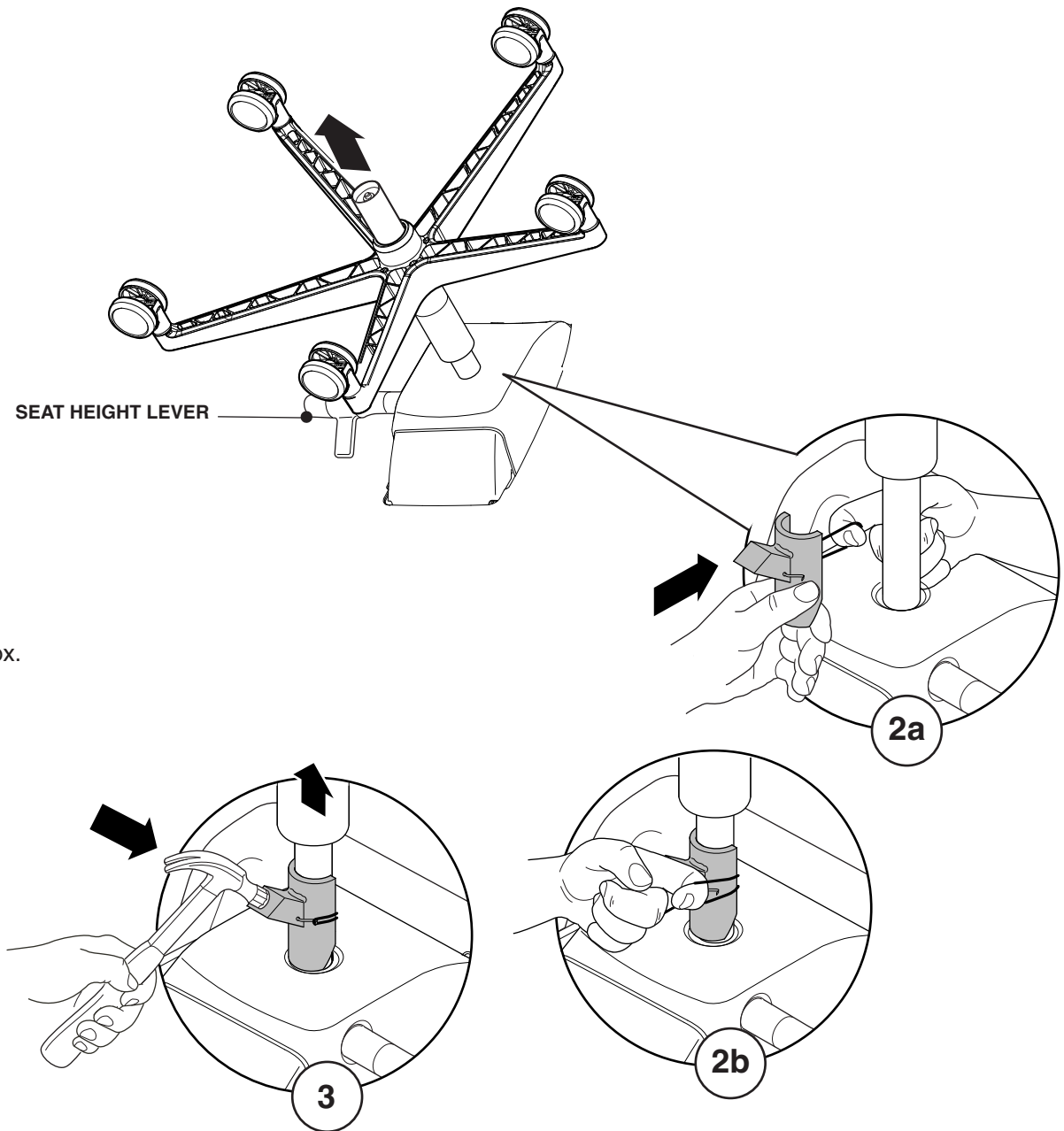
Remove Chair Control (Series 1 shown)

1. Extend the cylinder to the highest position using the seat height lever.

2. Secure cylinder removal tool (P/N 879100100) to cylinder and remove cylinder as shown below.

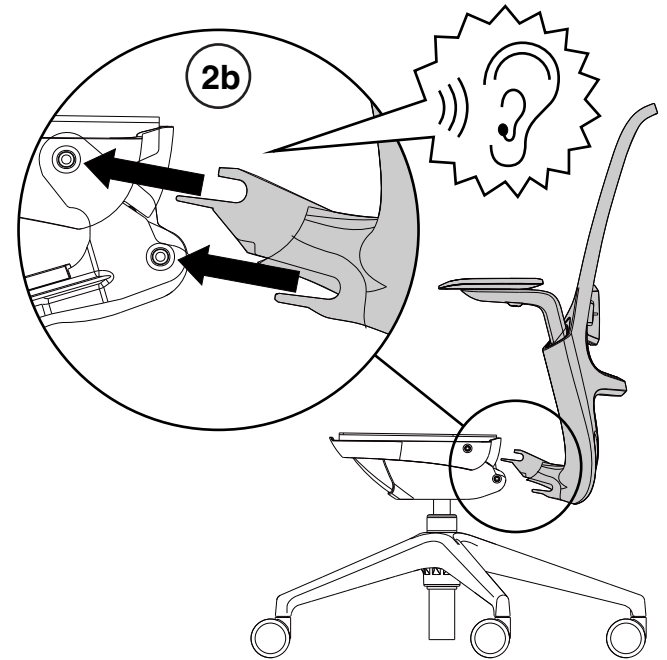
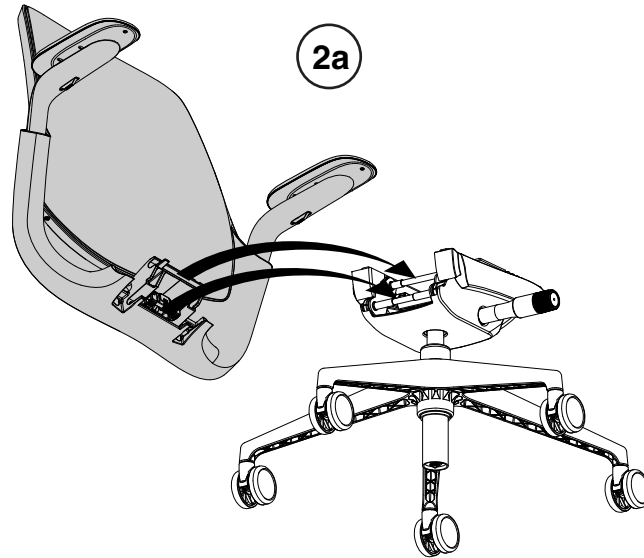
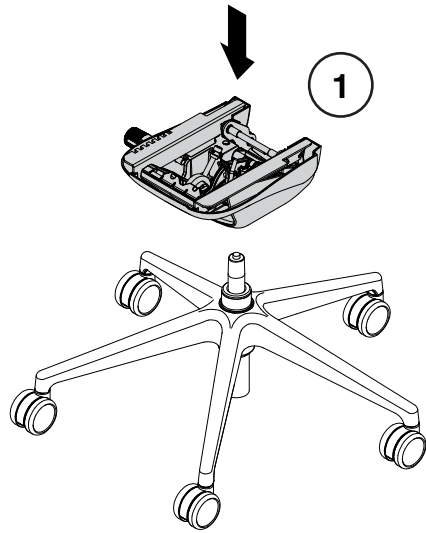
3. Apply lifting force to the column with one hand. With the hammer in the other hand, give the removal tool several solid hits on the flat area.

TIP: If cylinder does not separate from control, apply WD-40 where lift is embedded into control. Wait approx. 20 minutes and repeat procedure.

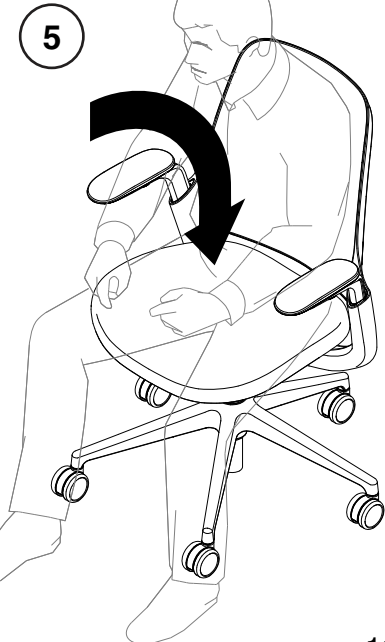
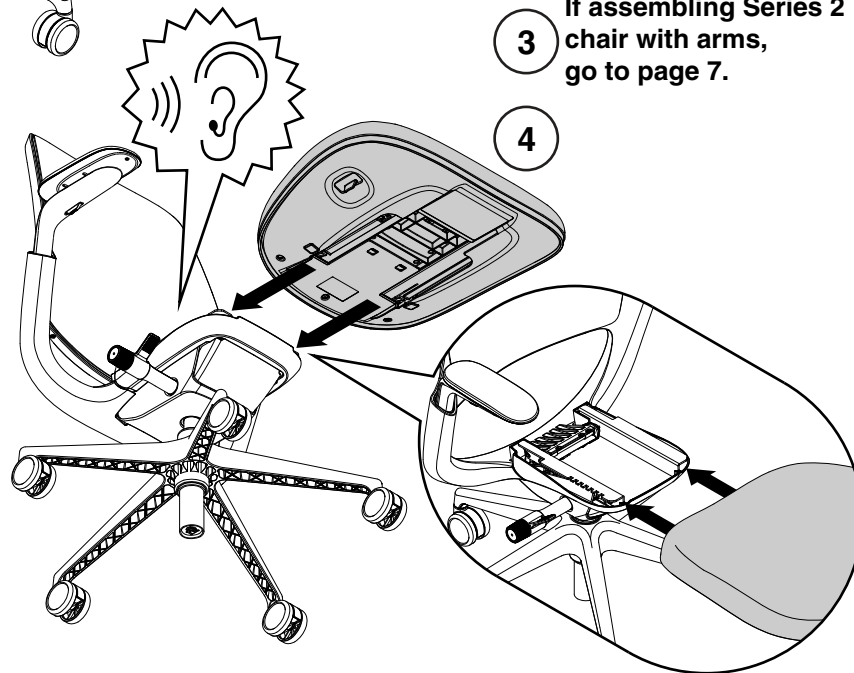


Steelcase

Assemble Chair With New Chair Control (Series 1 shown)



3 If assembling Series 2 chair with arms, go to page 7.



Assemble Arms for Series 2 (if present) (Series 2 shown)

1. Install arms.
2. Install two (2) screws on each arm.
Torque to 3-6 Nm (26-53 in-lbs).

